

## 【Singapore Stopover Holiday Mar2016-Mar2017】

Valid complete hotel stay till 31Mar2017. Applicable for booking with Singapore Airlines Holidays package only & check-in on arrival. Not valid for Singapore, Bintan & San Francisco package. # Special Terms & Conditions apply.

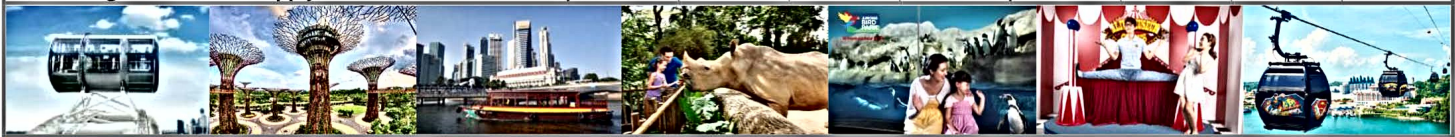
**Ticketing 2Mar-29Apr16**  
**Stopover Holiday (Apr-Jun)**  
**Upgrade HK\$6up**

**1) Singapore Stopover Holiday ( +HK\$355 per person up ) : 1 night hotel accommodation + shuttle-bus transfers**

**2) Singapore Stopover Holiday Upgrade ( +HK\$437 per person up ) :**

**1 night hotel accommodation + shuttle-bus transfers + 18 Attractions Admission & Chinatown Food Street Coupon #**

Booking till: 30Sep2016 Stay Period: Till 31Mar2017 (Last Check-Out) All Hotel Blackout: 15-18Sep Room Occupancy: * 2A   ^ 3A/2A1C   Other: 3A/2A2C - 2nd child sharing room with 2A1C is at free of charge (surcharge for breakfast apply)	BSSH				SSH			
	1 Nights Hotel + transfers (per person per night HK\$)				1 Nights Hotel + transfers + attractions admission + food discount (per person per night HK\$)			
	1 <sup>st</sup> night price		Extension Night		1 <sup>st</sup> night price		Extension Night	
Twin / 3 <sup>rd</sup> person	Single	Twin / 3 <sup>rd</sup> person	Single	Twin / 3 <sup>rd</sup> person	Single	Twin / 3 <sup>rd</sup> person	Single	



**@ SSH Super Deal HK\$6 up | Ticketing: 2Mar-29Apr2016 (on/before 29Apr,10am) | Travel Period: 1Apr-30Jun2016**

	Mar16	365	820	600	1000	456	880	650	1110
A <a href="#">Link</a> * / <a href="#">Royal</a> ^ / <a href="#">V Hotel Lavender</a> *	Apr16-Mar17	<b>355</b>	790	570	950	<b>\$6@ 437</b>	850	630	1060
B <a href="#">Chancellor @ Orchard</a> * / <a href="#">Days</a> * / <a href="#">Ibis Novena</a> * / <a href="#">Royal @ Queens</a> / <a href="#">Grand Pacific</a> ^ / <a href="#">Peninsula Excelsior</a>		440	930	630	1060	<b>\$245@ 550</b>	1010	740	1170
C <a href="#">Ramada</a> ^ / <a href="#">Miramar</a> ^ / <a href="#">Furama RiverFront</a> / <a href="#">Village Albert Court</a> ^		520	1120	740	1230	680	1170	790	1340
D <a href="#">Grand Central</a> ^ / <a href="#">Furama City Centre</a> / from 1Apr <a href="#">River View</a> (from 1Jul to be known as <a href="#">Four Points Sheraton, River View</a> )		850	1390	790	1340	1010	1560	900	1500

- |                               |                            |   |
|-------------------------------|----------------------------|---|
| 1) Singapore Flyer            | 8) Philatelic Museum       | 15) SIA Hop-on Bus  |
| 2) Chinatown Food Street S\$5 | 9) Malay Heritage Centre   | 16) Climb Max @ Megazip Adventure Park  |
| 3) Gardens by the Bay         | 10) National Orchid Garden | 17) Sentosa 2 attractions: Merlion / Wings of Time / Surrender Chambers @ Fort Siloso / Skyline Luge / 4D Adventureland Choice of 1 / Tiger Sky Tower / GoGreen Bi-Pedal Bicycle Ride / Segway Fun Ride |
| 4) Singapore Zoo              | 11) River Bumboat          | 18) Lee Kong Chian Natural History Museum   |
| 5) Jurong Bird Park           | 12) Original Walks         |   |
| 6) Mint Museum of Toys        | 13) National Gallery       |   |
| 7) Alive Museum               | 14) Cable Car (Roundtrip)  |   |



\*\* Offer details subject to change without prior notice. Shuttle Bus Schedule - [Click Here](#)

All attraction & food discount valid during stay period only. Offer details & conditions are subject to change without prior notice. Should passengers extend the stay with own arrangement, the return transfer from hotel to airport on seat-in-coach will be forfeited.




**Price per person HK\$ (Pax must book for the entire time they are staying before transiting. Not Valid for pax book BSSH/SSH)**

Ambassador TRANSIT LOUNGE: Terminal 2 / 3	per person	Ambassador TRANSIT HOTEL: Terminal 2 / 3	Twin	Single
First 6-hour block of lounge usage	200	First 6-hour block of hotel usage	160	410
Per subsequent blocks of 6 hours	200	Per subsequent blocks of 6 hours	420	680
Per additional hour	100	Per additional hour	100	170
<ul style="list-style-type: none"> <li>Shower with basic toiletries</li> <li>Light snacks/pastries/light meals, free flow of non-alcoholic beverages</li> <li>Local and international magazines / newspaper, television</li> <li>Complimentary WiFi / Internet facilities and local calls</li> </ul>		<ul style="list-style-type: none"> <li>6-hour stay in Standard Room (Non-smoking rooms)</li> <li>Television</li> <li>Ensuite bathroom</li> <li>Coffee / tea making facilities</li> <li>Wake-up call service</li> </ul>		

**【Changi Transit Programme – S\$20 Changi Dollar Voucher: Valid for travel until 31Mar2017】 (Click Here)**

Applicable for Singapore Airlines / SilkAir passengers travel beyond Singapore & in transit (at long as 1 leg of transit) within 24 hours at Changi Airport. One redemption per person only (while stocks last). Special Terms & Conditions apply. Offer details & conditions are for reference only.

	<b>Redeem</b> - Present passport, electronic ticket and boarding pass of full itinerary - Redemption point : iShopChangi Collection Centre at Transit areas of both Terminals 2/3
	<b>Usage</b> - Valid for one-time usage at selected retail, food & service outlets located at transit & public areas of Terminals 1/2/3 (excluding outlets in Arrival Baggage Claim Halls and some indicated outlets) OR - one-time access to the Ambassador Transit Lounge at Terminals 2/3 for up to 2 hours